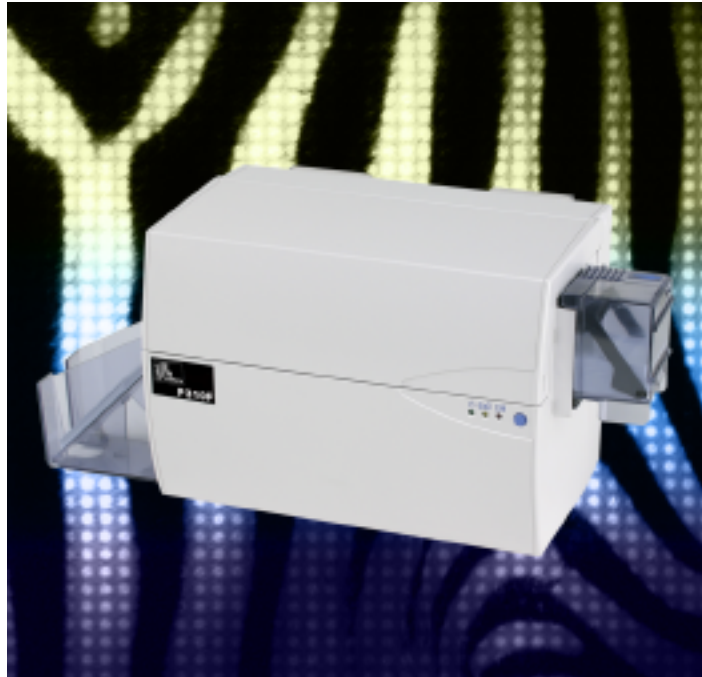




P310F

PERFORMANCE



P310F Card Printer

Basic Specifications:

- » 3.5 Seconds/Card Print Speed
- » Full Monochrome Single-Sided Card Printing
- » Parallel or RS232C Interface
- » 75 Card Capacity Feeder

Fast, Monochrome, High-Quality Plastic Card Printing Has Never Been Easier

The Eltron P310F is ideal for printing single-sided monochrome cards, adding hologram overlays, or scratch-off panels to preprinted cards. The P310F is the most affordable card printer in its class.

Use the P310F card printer to print:

- » Printing plastic cards in monochrome
- » Adding personalization to preprinted cards
- » Creating durable business cards, employee/visitor badges
- » Adding a holographic overlay to preprinted cards

Zebra P310F Advantages

Reliable Operation: The P310F utilizes a proven, reliable print engine for fast accurate printing. It produces sharp, readable bar codes, line art, graphics and text in seconds. Featuring a small footprint, the P310F is perfect for desktop applications.

The P310F is operator-friendly, easy-to-load, and features a low maintenance design making it simple for anyone to use. Green, yellow and red LED indicators provide easy to understand printer status. An easy to change, self-cleaning cartridge thoroughly removes dust on cards before printing, minimizing problems caused by contamination.



**Card
Printer
Solutions**

P310F

Card Printer Product Specifications



General Specifications

- » High speed printing
- » 1000 cards/hour single sided monochrome
- » 2MB image memory standard
- » Windows® drivers for 98, NT, 2000, XP, ME
- » One year printer warranty
- » One year (unlimited passes) printhead warranty

Monochrome Printing

- » Monochrome thermal transfer printing
- » 3.5 seconds per card, edge to edge
- » 300 dpi (11.8 dots/mm) print resolution

Bar Codes

- » Code 39, Code 128 B & C with & without check digit
- » 2 of 5 & 2 of 5 Industrial
- » UPC-A, EAN 8 & EAN 13
- » PDF-417 2D bar code and other symbologies can be printed via Windows drivers and WindCard Classic utility tool

Fonts

- » True Type fonts via Windows driver

Card Specifications

- » Types: PVC, PVC Composite
- » Card width/length: ISO CR-80-ISO 7810, 2.12" (54mm) x 3.38" (86mm)
- » Magnetic Stripe-ISO 7811
- » Smart Card-ISO 7816-2
- » Card thickness: 10 mil (.25mm) to 60 mil (1.524mm)
- » Card feeder capacity: 75 cards (30 mil)
- » Card output hopper capacity: 75 cards (30 mil)

Ribbon Specifications

- » Monochrome: 1500 & 1000 cards/roll
- » Monochrome colors: black, red, blue, green, silver, gold, white and scratch-off gray
- » K Resin +O: 800 cards/roll
- » Overlay varnishes: Clear and Hologram: 350 cards/roll

Communications Interface

- » Parallel standard(parallel cable included)
- » RS232C serial optional

Mechanical

- » Width: 12.4in (315mm)
- » Depth: 7.75in (198mm)
- » Height: 8.7in (220mm)
- » Weight: 13.4lbs (6.1kg)

Electrical

- » 110 ~ 240 Volts AC, 50 ~ 60 Hz (auto switching)
- » FCC Class A, CE, UL and CUL approved

Environmental

- » Operating Temperature: 60°F to 86°F (15°C to 30°C)
- » Operating Humidity: 20% to 65% non-condensing
- » Storage Temperature: 23°F to 158°F (-5°C to 70°C)
- » Storage Humidity: 20% to 70% non-condensing
- » Ventilation: Free air

Options

- » RS232C serial port (EPCL recommended for fast throughput)
- » Smart card contact station (30 mil cards only)
- » Magnetic encoder (30 mil cards only)
- » Cleaning supplies
- » Service manual

<http://cards.zebra.com>

*Optimized for use with Zebra media.



Zebra Technologies Corporation



An ISO 9001 registered company ©2003 ZIH Corp. Specifications listed are for base model printers with standard features only unless otherwise notes. Specifications subject to change without notice. All product and brand names are trademarks of their respective companies. All rights reserved. All Copyrights, Trade and Service Marks shown or depicted herein are registered by their owners. No infringement is made for or implied by the use thereof. **Part No. P310-10/03**

North America

Zebra Technologies Corporation
Card Imaging Division
1001 Flynn Road
Camarillo, CA 93012-8706
USA
Telephone: +1 805 579 1800
Fax: +1 805 579 1808
Toll free in US: 800 452 4056
e-mail: cards@zebra.com

Europe, Middle East, Africa

Zebra Technologies Corporation
Card Imaging Division
The Valley Centre, Gordon Road
High Wycombe
Buckinghamshire HP13 6EQ, UK
Telephone: +44 870 241 1527
Fax: +44 870 241 0765
e-mail: eurosales@zebra.com

Asia Pacific

Zebra Technologies Corporation
Card Imaging Division
1 Sims Lane #06-11
387355 Singapore
Telephone: +65 6858 0722
Fax: +65 6885 0836
e-mail: asiasales@zebra.com

Latin America

Zebra Technologies Corporation
Card Imaging Division
6175 NW 153rd St. #121
Miami Lakes, FL 33014
USA
Telephone: +1 305 558 3100
Fax: +1 305 558 8485
e-mail: latinsales@zebra.com